

# THE SHRINE OF OUR LADY OF WALSINGHAM



Educational and guided visits

## Experience England's Nazareth

Information for Schools, Churches and Community Groups



# INTRODUCTION

---

Founded by the Lady Richeldis in 1061, destroyed by Henry VIII in 1538, restored in 1922 by Father Hope Patten, the Anglican Vicar of Walsingham- the Shrine has had an eventful history across nearly a thousand years.

This medieval place of pilgrimage, which rivalled Canterbury as a destination, was visited by thousands of pilgrims from across Britain and Europe.

It became known as 'England's Nazareth' because of the nature of the vision which the Lady Richeldis experienced.

Today, 350 years after the reformation, the past 95 years have witnessed the dramatic restoration of pilgrimage to Walsingham.



SANDFORD  
AWARD



2018-2023  
QUALITY MARK FOR  
HERITAGE EDUCATION

# The Walsingham Story

In the year 1061, in the reign of St Edward the Confessor, a widow of the lord of the manor of Walsingham Parva, called Lady Richeldis, had a vision of the Virgin Mary. The Virgin Mary appeared to Richeldis and took her in spirit to Nazareth and showed her the house where the Angel Gabriel had appeared to her. Richeldis was told to take note of the measurements of the Holy House and to build a reproduction of it in Walsingham (hence the name 'England's Nazareth' which was given to Walsingham). Richeldis saw the vision three times.

It proved difficult for workmen to build the wooden house and Richeldis spent all night in prayer. The next morning it was discovered the chapel was completed and it was believed that Our Lady, with the assistance of the holy angels, had removed the House to the spot which she herself had chosen, by which a spring of water was found. This is the Walsingham legend.

Walsingham quickly became a centre of pilgrimage and was the most popular pilgrimage site in Britain. In the 14th century Augustinian Canons built a Priory to look after the pilgrims and they encased the Holy House in a chapel of stone to protect it. Many kings and queens came to pray at the Shrine, the first being Richard Coeur de Lion. Pilgrims often took off their shoes to walk the last mile to the Shrine barefoot as a sign of penitence, or being sorry to God. This place is now the site of the Slipper Chapel (the Roman Catholic National Shrine).

In 1536 King Henry VIII, who had made pilgrimages here, dissolved the monasteries (destroyed them). In 1538 his Commissioners came to Walsingham to break up the holy buildings and seize any valuable goods and the Shrine was destroyed. They burnt the statue of Mary with the infant Jesus on her knee which was above the altar.

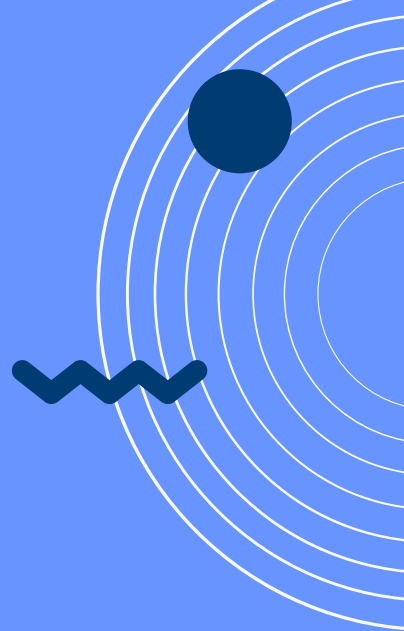


In 1921 Father Alfred Hope Patten became the Vicar of St Mary's Church in Walsingham. He wanted to revive pilgrimage to the village so he had a statue carved from wood of Mary with Jesus. It was copied from the original Priory seal now in the British Museum. This statue was put in a side chapel in St Mary's Church.

Father Patten set about raising money to build a new shrine. He purchased some land in the village opposite the Priory and plans were drawn up for a church to be built with a Holy House inside it. The church was designed so that it would resemble the original shrine, although it was made of stone not wood. A well was discovered when building started and is part of the new church.

In 1931 the statue was taken from St Mary's Church and placed above the Altar in the new Holy House. Pilgrims were invited to light candles in it as a sign of their prayers.

In 1938 that church was enlarged to form the Anglican Shrine, more or less as we know it today.



# Visiting

The Department is dedicated to providing opportunities to promote students' spiritual, moral, social and cultural development through curriculum based programmes with a special emphasis on Christian faith; we have recently been awarded our second Sandford Award for excellence in heritage education.

The Sandford Award Administrator wrote to the Department as follows:

*"I am delighted to inform you that The Anglican Shrine of Our Lady of Walsingham has won another Sandford Award. Congratulations! Our judge, Jenny Newhouse was very impressed by the learning programmes on offer at the site and felt that they were worthy of commendation by the scheme."*

We offer a number of educational programmes to suit various age groups; most of these last a whole day (usually 10.00am to 3.00pm, but timings can be adapted to suit your needs). Whatever else may be provided, our programmes always include the theme of pilgrimage and a visit to the Shrine Church.

Residential visits offer far greater scope for planning an unhurried programme and we can tailor-make a package to suit the needs of your students.

In this brochure you will find a selection of themed, guided visits. All are adaptable for SEN, parish and community groups. The programmes are carefully planned to enhance and supplement your teaching across the curriculum. They are linked to the National Curriculum and Local Agreed Syllabi for RE/Nonstatutory National Framework for RE, for example:

**RE / RS:** Pilgrimage, Christianity, Places of Worship, Symbolism, Beliefs and Practices, Festivals, Religious and Moral Stories, Rituals, Moral and Ethical Issues.

**Art:** Religious Art, Icons, Sculpture.

**History:** Medieval times, Tudors.

**Spiritual and Social Development:** Lots of opportunities for discussion and reflection.

A visit to Walsingham can also help your pupils meet the agreed local SACRE and SMSC learning objectives. It can also help support the use of the RE teaching resource '*Understanding Christianity*'.



# Primary Programmes

## To be a Pilgrim

KS1/KS2 RE/History/ Spirituality Focus

Discover why Pilgrims have visited Walsingham for nearly 1000 years! Dress as a medieval pilgrim (with groups of 30 or less) whilst finding out about the history of Walsingham.

Then choose either:

**Option 1:** Explore the grounds of the original Abbey and collect items in your Pilgrim bag that Pilgrims would have had used many years ago. These items will be used in the afternoon!

**Option 2:** Explore the Shrine grounds and learn about pilgrimage badges. Make your own to take home and remember your time in Walsingham.

In the afternoon, hear how the present-day Shrine was established by Father Alfred Hope Patten. Tour the Shrine Church, discover why Pilgrims still visit this special place today and what they actually do here! Light a candle in the special Holy House and find out about the well. Finally, take part in a short service of 'Sprinkling' with other Pilgrims.



## Walsingham Churches Trail

KS2 RE/Art/Spirituality Focus

Take a wander around the village of Walsingham and discover 3 very different churches belonging to different Christian denominations. Visit the Methodist, Russian Orthodox and Roman Catholic Churches and find out how they are the same and yet very different! Consider the differences in beliefs, architecture and styles of worship. Find out about how the Eucharist is celebrated in different ways.

In the afternoon, explore the Anglican Shrine Church, which is different again! Whilst touring the Shrine, find out why pilgrims visit Walsingham and what they do there. Light a candle in the Holy House and take part in a short service of 'Sprinkling' with other Pilgrims.



## Being a Christian

KS1/KS2 RE/Art/Music/Spirituality Focus

Explore how and why Christians worship. Discover the meaning behind Christian symbols used in a place of worship. Investigate how feelings and beliefs are expressed through symbolic actions, colours and clothes. Explore the artwork in the Shrine Church, including icons in the Russian Orthodox Chapel and consider what artists are trying to portray and how Christians use these images in their prayer and worship. Handle a variety of artefacts and objects that are used in prayer.

In the afternoon, discover why Christians go on pilgrimage and what happens on a pilgrimage to Walsingham. Why is Walsingham such a special place? Why is it called England's Nazareth? Why is Mary so special here? Spend time in the Holy House and light a candle. Join together with Pilgrims to experience a short service of 'Sprinkling' with water from the Well.



# Primary Programmes

## Christmas Experience

EYFS/KS1/KS2 RE/Art/Music/Spirituality Focus



Christmas in Walsingham is very special! Spend the day on an interactive journey and learn all about the very start of the Christian faith. Find out what happened when the Angel Gabriel visited Mary in her home in Nazareth and why that is so important here in Walsingham. Spend time reflecting of the events in the Christmas story and what they mean to Christians. Make a Christmas decoration to take home and remember your day in Walsingham. Our Christmas Experience day is available in November and December.

## Easter Experience

KS1/KS2 RE/Art/Music/Spirituality Focus

Take part in an interactive journey around the Shrine grounds and church, learning all about the events of Holy week and Easter. Re-enact Palm Sunday, reflect in the garden with Jesus, enter the tomb where Jesus was laid and learn about how he rose from the dead and appeared on Easter day! This is highly interactive and reflective day for primary pupils and is available in the weeks leading up to Easter.



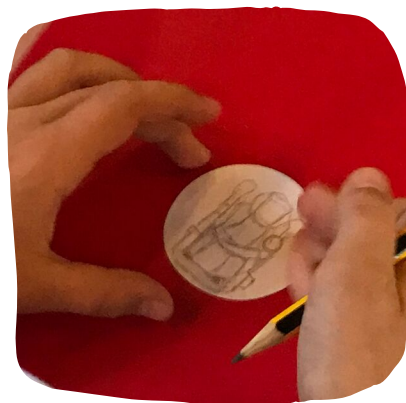
## Other Options

We are able to adapt any of our programmes to suit your exact requirements. We are also able to provide a number of other activities or discussions.

For example:

- Children's Stations of the Cross
- Making a Pilgrim Badge
- Meet a Nun
- Meet a Priest
- Creative prayer activities
- Teaching Mass
- Stained glass windows and other crafts
- Tudor life (including dressing up and optional Tudor Banquet)

Please contact us, if you have specific requirements and we will work together to create a bespoke programme.



# Secondary Programmes

## Pilgrimage Experience

KS3/KS4/KS5 RE/RS/HISTORY/SPITUALITY Focus

Choose one of the two options for the morning session:

1. Discover how pilgrimage to Walsingham began in 1061 and what the pilgrims who came here would have done. Explore the ruins of the original Abbey and find out what happened to it!
2. Begin your journey by exploring the Roman Catholic National Shrine and visit the Slipper Chapel. This is where medieval pilgrims said prayers before walking the last mile to the Shrine, barefoot! Then walk the 'Holy Mile' into the village (barefoot optional!).

Both of these are then followed with a short talk or discussion with a priest, one of the sisters from the Priory of Our Lady or a pilgrim, on the importance of pilgrimage or a topic of your choice.

In the afternoon, discover the modern Shrine with the restored Holy House and see how pilgrimage forms part of the modern Christian way of life. There is time for personal reflection and an opportunity to light a candle in the Holy House. Finally, take part in a short service of 'Sprinkling' with other Pilgrims.



In the afternoon, explore the Anglican Shrine Church, which is different again! Compare and contrast the Churches seen in the morning with the Anglican Shrine Church. Whilst touring the Shrine, find out why pilgrims visit Walsingham and what they do there.

Learn why Walsingham is so special to Christians. There is opportunity for personal reflection and to light a candle in the special Holy House. End the day by taking part in a short service of 'Sprinkling' with regular Pilgrims.

## One Church, One Faith

KS3/KS4/KS5 RE/RS/ART Focus

An opportunity to visit four churches from different Christian denominations in one day! Take a tour around the village and visit the Methodist, Roman Catholic and Russian Orthodox churches. Discover the similarities and differences in emphases, worship and fixtures and fittings. All very different, but still Christian!



# Secondary Programmes

## Exploring Christianity

KS3/KS4/KS5 RE/RS/Art/Music Focus



Explore how and why Christians worship. Discover the meaning behind Christian symbols used in a place of worship. Investigate how feelings and beliefs are expressed through symbolic actions, colours and clothes.

Explore the artwork in the Shrine Church, including icons in the Russian Orthodox Chapel and consider what artists are trying to portray and how Christians use these images in their prayer and worship. Handle a variety of artefacts and objects that are used in prayer, whilst listening to a variety of different styles of music that are used for worship.

In the afternoon, discover why Christians go on pilgrimage and what happens on a pilgrimage to Walsingham.

Why is Walsingham such a special place?

Why is it called England's Nazareth?

Spend time reflecting in the Holy House and light a candle. Join together with Pilgrims to experience a short service of 'Sprinkling' with water from the Holy Well.

## Other Options

We are able to adapt any of our programmes to suit your exact requirements.

We are also able to provide a number of other activities or discussions for Secondary Schools and Collages.

For example:

- Talks on vocation
- Discussion on key moral and ethical issues
- Talk/Discussion with a Priest
- Talk/Discussion with a nun
- Teaching Mass
- Creative prayer or reflection activities
- Take part in Stations of the Cross
- Discussion on global Issues
- Discussion on values and commitments in faith-based living.

If you have other specific requirements, please get in touch, so that we can provide a bespoke programme.



# Visits to Schools/Groups

## Walsingham can come to you!

We have a range of options available if you would like us to come out to you.

## Pilgrimage Day/Half Day

KS2/KS3/KS4/KS5 RE/RS/History/Art/Spirituality Focus

A member of our Schools Department will visit you in your school to explore what pilgrimage is and why pilgrims come to Walsingham. Learn all about the history of this special place, the reasons people go on pilgrimage, what they actually do and how it impacts on their lives.

This is suitable for both primary and secondary schools and will be adapted to suit the age of your students and your own requirements.



## Collective Worship/Talks

We can provide a range of talks on pilgrimage and other Christianity topics for any size of group.

This could then be combined with a pilgrimage session for a class.

Please email Caroline Ward on [schools@olw-shrine.org.uk](mailto:schools@olw-shrine.org.uk) for further details or to discuss your requirements.

Our short talks are free- you will just need to pay travel expenses.

## Pre-Visit Options

If you have booked to visit the Shrine and take part in one of our programmes we are able to come out to your school to provide a pre-visit session, to help your students get the most out of their day.

This is free session-you will just need to pay travel expenses.

We welcome pre-visits from teachers, where a member of our Schools Department will be happy to show you around the site, explain our programmes in more detail and discuss your requirements.

## Support for Schools and Groups

Our Schools and Young Pilgrims Officer is available to come out to your school or group, to lead sessions or to provide support in a range of areas:

- INSET days or half days
- Teaching Christianity
- Setting up/developing Christian clubs or groups
- Confirmation and First Communion
- Holiday Clubs
- Creating/Developing a Christian Ethos
- Ministry to Children and Young People
- Collective Worship

Please contact Caroline Ward on [schools@olw-shrine.org.uk](mailto:schools@olw-shrine.org.uk) or 01328 824205 to discuss your requirements.

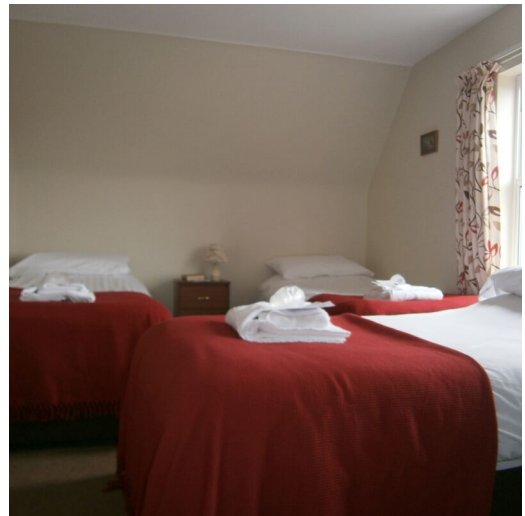
# Residential Visits

Residential visits offer far greater scope for planning an unhurried programme and we can tailor-make a package to suit the needs of your students. We can combine any of our programmes and you can then take the opportunity to add in some of our optional activities or discussions.

Groups are also welcome to take an active part in our regular pilgrimage services, which will give them a much deeper understanding and depth of experience. Take part in a candle-lit procession or have a teaching mass, make a pilgrimage badge or a stained glass window.

Accommodation is available from 1st February each year until early December. Rooms are warm and comfortable with a variety of single, twin and triple rooms. Towels and bed linen are provided.

Meals are provided in the Refectory and packed lunches can also be ordered if you decide to explore the local area or visit the beach! There are a range of places to visit around Walsingham, including centres which offer Outdoor and Adventurous activities.



# General Information

## Lunches and Refreshments

Upon booking, you will be allocated a room for your use during the day. Any lunches, coats etc. can be left there as the room will be locked when not in use. You are welcome to eat packed lunches in there or weather permitting you can picnic on our beautiful gardens. Rubbish sacks and bins will be provided for your use. You are also welcome to order meals or packed lunches from our refectory. These must be booked in advance.

On the ground floor of the Refectory complex is the Norton Café. Light meals/sandwiches and refreshments may be purchased here. We would ask however, that you contact us in advance if a large number of pupils/students wish to purchase food during the lunch break.

## Behaviour

The Shrine is a peaceful and quiet place of prayer and worship. We therefore ask you to explain to your pupils in advance of your visit that quiet, respectful behaviour is appreciated. There will often be pilgrims and other members of the public at the Shrine. Groups are welcome to enjoy the gardens at lunch time, but we would ask that there is no running around.

## Toilets

Toilets are located next to the main reception area and next to the Norton Café, on the ground floor. There are disabled facilities in both areas. These are open to the general public so adult supervision is required at all times.

## Shrine Shop

The Shrine Shop is in Common Place almost opposite the entrance to the Abbey grounds. It is generally open during the day and groups are welcome to visit. We do ask that only 8 students, with at least one adult go into the shop at one time, due to its size. This ratio should also be applied to other shops in the village.

## Risk Assessment

As part of the booking process, we will send you our risk assessment advice. This will hopefully aid you in undertaking your own risk assessment. We encourage visits to The Shrine in advance and we will be happy to arrange a date and time for you to be shown round by a member of the Schools department.

## Sprinkling

The Sprinkling at the Well service takes place at the Saxon well in the church and is an important part of pilgrimage. The priest will explain about the service and then lead a prayer before inviting pilgrims to go to the well. Pilgrims receive the water in three ways: a sip to drink, the sign of the cross on the forehead and poured into their hands. It represents the gift of life, a reminder of baptism and the constant generosity of God's love. It is a non-sacramental service, but gives the pupils a 'hands-on' experience of pilgrimage and is very popular with schools. Receiving the water however, is not compulsory and any pupils or students who do not wish to take part are invited to watch.

# Booking

Advance booking is essential for any of our programmes or if you are coming on a self-guided visit.

Email us for the current price list or it is available on our website.

Call or email us to discuss your requirements, make a provisional booking or if you have any further questions:

Tel: 01328 824205

Email: [schools@olw-shrine.org.uk](mailto:schools@olw-shrine.org.uk)



A booking form will then be sent to you via email. Please complete this within 2 weeks and return to the Schools department.



Once we have received your completed booking form and deposit you will be sent the following:

- a confirmation letter
- a teachers guide
- an invoice
- a personalised visit itinerary
- map and directions for drivers
- risk assessment advice
- the story of Walsingham to share with your pupils/students
- residential bookings will receive extra information with details of accommodation etc.

We request full payment in advance of your visit. Invoices will be sent by the Shrine Finance Department.

Please inform us of any changes if your group size increases or decreases. Unfortunately, we are unable to offer a refund for children who do not attend on the day of the visit.



# Our Commitment to you

**A professional service:** Members of the Schools Department are all fully qualified teachers, all of whom have enhanced DBS checks.

**Learning:** We aim to present information in an interesting, engaging and friendly manner suitably adapted for each individual age group.

**Preparation/Risk Assessment:** We will provide information to assist you with your own risk assessment and welcome pre-visits to The Shrine.

**Content:** Content and resources will be inline with curriculum and syllabus developments.

**Safe Learning Environment:** We provide your group with a lockable room to store lunches, bags and coats.

**Partnership:** We will aim to suit your particular needs wherever possible. We welcome feedback as we are always striving to improve what we offer. A feedback form will be sent after your visit.



For further information about The Shrine of Our Lady of Walsingham please visit our website  
**[www.walsinghamanglican.org.uk](http://www.walsinghamanglican.org.uk)**

or follow us on Facebook, Twitter and Instagram  
Shrine of Our Lady of Walsingham (Anglican)



Email: **[schoolseolw-shrine.org.uk](mailto:schoolseolw-shrine.org.uk)**

Tel: **01328 824205**