

THE SHRINE OF OUR LADY OF WALSINGHAM



# CHILDREN'S PILGRIMAGE

FRIDAY 1ST - SUNDAY 3RD MARCH 2024

# MARY'S SONG



[www.walsinghamanglican.org.uk](http://www.walsinghamanglican.org.uk)



# MARY'S SONG

Join us for an action-packed and prayerful pilgrimage to England's Nazareth. Did you know that Mary, Jesus' mother, wrote a song? When she heard that she was going to be pregnant with Jesus, she wrote a song to thank God for all the good things He had done for her.

Join us to explore the message of having faith. We are to trust in God. No matter the situation or circumstance, God has it all in his hands. We should strive to imitate the heart and mind of Mary in every situation.

The Children's Pilgrimage begins on the Friday evening with supper at 6.30pm and then our first Visit to the Holy House is at 8.15pm. After a packed weekend, it concludes on the Sunday with lunch at 12.30pm



## SUITABILITY

The Children's Pilgrimage is suitable for children between the ages of 7-11 in Sunday Clubs, Churches, after-school clubs, schools, uniformed organisations and families etc. from all over the country!

## WHAT TO EXPECT

- Lively worship and great music
- Daily Mass
- Sprinkling from the well
- Interactive prayer stations
- Holy Mile Walk
- Benediction of the Blessed Sacrament
- A fun-packed afternoon of activities
- Disco





## ACCOMODATION

Your group will be staying in the Shrine's accommodation in a mixture of twin and triple rooms (with single rooms available for adults). Towels and soap are provided. Meals will be provided in the pilgrim refectory starting with supper 6.30pm on Friday 3rd March and the last meal will be lunch on Sunday 5th March. We do advise that children (and adults!) bring their own named water bottle with them.



## COST

**£95 per child**

**£126 per adult**

Price includes all meals, accommodation at the Shrine, all activities and a free T-Shirt for each child. Adult T-Shirts available to order for £10 each.



## FINANCIAL SUPPORT

The Shrine is able to provide financial support towards the cost of your travel. Email the Director of Education, Caroline Ward [schools@olw-shrine.org.uk](mailto:schools@olw-shrine.org.uk) to apply, giving details of the cost of your transport.





## HOW TO BOOK:

Reserve your place by contacting the Hospitality Team on:

**01328 820239**

**or [accom@olw-shrine.org.uk](mailto:accom@olw-shrine.org.uk)**



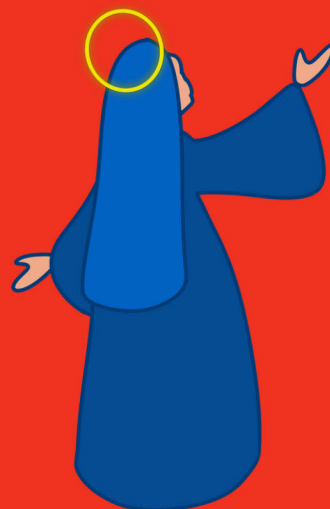
There is a non-refundable deposit of £20 per person to confirm and secure your booking.

*You will then be sent a link to our online booking form or you can find it on the website by scanning the QR code below.*

Nearer the time we will send you a form to complete to provide the Shrine with all the details of each pilgrim in your group. You will also be sent a Shrine consent form for each of your young pilgrims, a medical form, a programme for the weekend and a booklet containing all the details you will need along with risk assessment information. There will be a handy checklist to ensure that you are fully prepared for your pilgrimage.

We would like as many children as possible to join us and, as space is limited, please do not bring more adults than is necessary. You will need at least 2 adults and please check your diocesan guidelines for the number of adults required.

**We are not able to accept parties with a ratio of more than 1 adult per 4 children, unless your group is 10 children or fewer. Do get in touch if you are unsure by emailing [Caroline Ward at schools@olw-shrine.org.uk](mailto:schools@olw-shrine.org.uk)**



SCAN ME