

# THE SHRINE OF OUR LADY OF WALSINGHAM EDUCATIONAL AND GUIDED VISITS



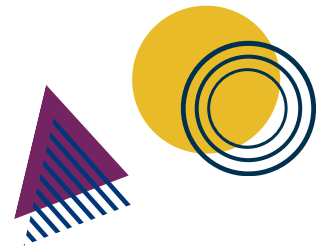
*'This site demonstrated high quality learning throughout the assessment visit which was confirmed by the teaching staff present. The teaching was immersive and sensory, with each location providing unique opportunities which were well interpreted by the session lead.'* Sandford Award Judge

## EXPERIENCE ENGLAND'S NAZARETH





# INTRODUCTION



Founded by the Lady Richeldis in 1061, destroyed by Henry VIII in 1538, restored in 1922 by Father Hope Patten, the Anglican Vicar of Walsingham - the Shrine has had an eventful history that spans nearly a thousand years.

This medieval place of pilgrimage, which rivalled Canterbury, was visited by thousands of pilgrims from across Britain and Europe.

Walsingham became known as 'England's Nazareth' because of the nature of the vision which the Lady Richeldis experienced.

In the modern era, the past 100 years have witnessed the dramatic restoration of pilgrimage to Walsingham.

The Education Department is dedicated to providing opportunities to promote students' spiritual, moral, social and cultural development through curriculum based programmes with a special emphasis on Christian faith. The Shrine has the Learning Outside the Classroom (LOtC) Quality badge and has also been awarded a third Sandford Award for excellence in heritage education.

*The Anglican Shrine of our Lady of Walsingham offers a unique opportunity to immerse students in exploring the Christian faith across different denominations of Christianity. Sessions have been well developed in conjunction with teachers and education professionals.*

*Students will come away not only with learning objectives met but having benefitted from a totally unique bespoke experience. The team have a clear, concise and confident offer which puts the learner at the centre of all they do.*

**Sandford Award Judge**





We offer a number of educational programmes to suit various age groups; most of these last a whole day (usually 10.00am to 2.30pm, but timings can be adapted to suit your needs). Whatever else may be provided, our programmes always explore the theme of pilgrimage and include a visit to the Shrine Church. We also have a range of resources to support teaching including teacher guides and videos available on our website.

Residential visits offer greater scope for planning an extended programme and we can tailor-make a package to suit the needs of your students.

Visits are led by our team of experienced and qualified teachers.

All visits are adaptable for a variety of needs including SEND and gifted and talented. The programmes are carefully planned to enhance and supplement your teaching across the curriculum. They are linked to the National Curriculum and Local Agreed Syllabi for RE and can help meet OFSTED and SIAMs objectives concerning spiritual and personal development.

Examples of areas we cover include:

**RE / RS:** Pilgrimage, Christianity, Places of Worship, Beliefs and Practices, Festivals, Moral and Ethical Issues.

**English:** - Creative Writing

**Art:** Religious Art, Icons

**History:** Medieval times

**Spiritual and Social Development:** Discussion and reflection

## LENSES

Where you see these symbols, the relevant lenses will be used to focus teaching.



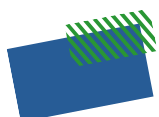
Theology - Thinking through believing



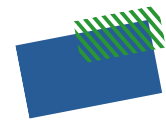
Philosophy - Thinking through thinking



Sociology - Thinking through living



# PRIMARY PROGRAMMES



We offer a range of programmes both day and residential for primary aged children and all our visits can be adapted to suit your particular requirements.

## TO BE A PILGRIM

KS1/KS2

RE/History/ Spirituality



- Discover why pilgrims have visited Walsingham for nearly 1000 years
- Time travel back to Medieval Walsingham.
- Find out what a pilgrim would have needed for their journey.
- Visit the Abbey grounds to see the original site of the Holy House
- Explore the Welcome Centre
- Art or craft activities linked to learning.
- Explore the present-day Shrine
- Discover what pilgrims do today and what it means to them.
- Spend time reflecting and light a candle in the special Holy House.
- Take part in a short service of 'Sprinkling' at the Well with other Pilgrims.



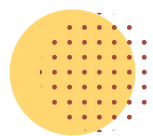
## CHURCHES TRAIL

KS2

RE/Art/Spirituality



- Explore the village of Walsingham
- Discover three very different Christian churches
- Visit the Methodist, Orthodox and Roman Catholic Churches
- How they are the same and yet different?
- Explore the Anglican Shrine Church, which is different again!
- Find out why pilgrims visit Walsingham
- What do pilgrims do?
- Light a candle in the Holy House and take part in a short service of 'Sprinkling' with other pilgrims.





## GODLY PLAY

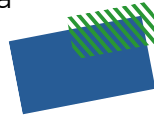
**KS1/KS2**

**RE/Spirituality focus**



The Shrine now has a fully stocked Godly Play room for use with school groups, either independently or led by our team.

- Enter the room ready for the session
- Experience a story, told using Godly Play methods
- Wonder about the meaning of the story
- Time to respond to the story using a variety of materials
- Final gathering and sharing time
- Explore the Anglican Shrine Church
- Find out why pilgrims visit Walsingham
- What do pilgrims do?
- Light a candle in the Holy House and take part in a short service of 'Sprinkling' with other pilgrims.

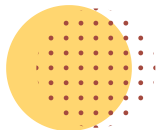


## OTHER OPTIONS

We are able to adapt any of our programmes to suit your exact requirements. We are also able to provide a number of other activities and areas for discussions.

For example:

- Children's Stations of the Cross
- Making a Pilgrim Badge
- Meet a Nun
- Meet a Priest
- Creative prayer activities
- Teaching Mass
- Stained glass windows, Holy Houses and other crafts



Please contact us if you have specific requirements and we will work together to create a bespoke programme.



## CHRISTMAS EXPERIENCE

**EYFS/KS1/KS2**

**RE/Art/Music/Spirituality Focus**



Christmas in Walsingham is very special!

- Highly interactive day
- Discover the beginning of the Christian faith
- Why is the story important in Walsingham?
- Reflect on the events in the Christmas story and what they mean to Christians
- Make a Christmas decoration to take home

*Our Christmas Experience day is available in November and December.*



## EASTER EXPERIENCE

**EYFS/KS1/KS2**

**RE/Art/Music/Spirituality Focus**



- Interactive journey around the Shrine grounds and church
- Learning all about the events of Holy Week and Easter
- Re-enact Palm Sunday
- Reflect in the garden with Jesus
- Enter the tomb where Jesus was laid
- Learn about how he rose from the dead and appeared on Easter Day!

This is a highly interactive and reflective day for primary pupils and is *available in the weeks leading up to Easter.*

# SECONDARY PROGRAMMES

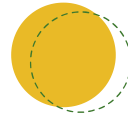
Our range of programmes for secondary schools and colleges can be adapted to suit your particular requirements. Documents linking exam boards and syllabi with our visits can be found by scanning the QR code or by visiting: <https://bit.ly/3AIYVFg>



## PILGRIMAGE EXPERIENCE

KS3/KS4/KS5

RE/RS/HISTORY/SPIRITUALITY focus



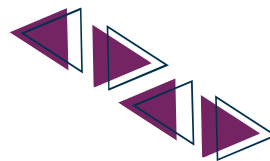
- Discover how pilgrimage to Walsingham began in 1061 and what the pilgrims who came here would have done.
- Explore the ruins of the original Abbey and find out what happened to it
- Optional short talk or discussion on the importance of pilgrimage or a topic of your choice. Talks are led by a priest, one of the Sisters from the Priory of Our Lady or a member of the Education Team
- Visit the modern Shrine
- How does pilgrimage form part of the modern Christian way of life?
- Time for personal reflection, an opportunity to light a candle in the Holy House and to take part in a short service of 'Sprinkling' with other pilgrims



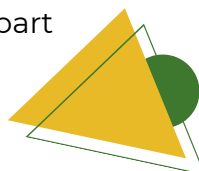
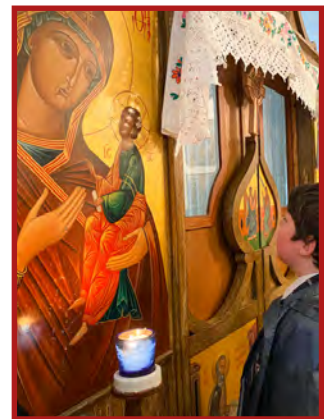
## ONE CHURCH, ONE FAITH?

KS3/KS4/KS5

RE/RS/ART Focus



- Visit four churches from different Christian denominations in one day
- Take a tour around the village and visit the Methodist, Roman Catholic, Orthodox and Anglican Shrine churches.
- Discover the similarities and differences in worship, fixtures and fittings, nature and diversity
- How is Holy Communion understood and celebrated in each?
- Why do pilgrims visit Walsingham and what they do?
- Why is Walsingham is so special to Christians?
- Opportunity for personal reflection
- Light a candle in the special Holy House and take part in a short service of 'Sprinkling' with Pilgrims



# CREATIVE WRITING

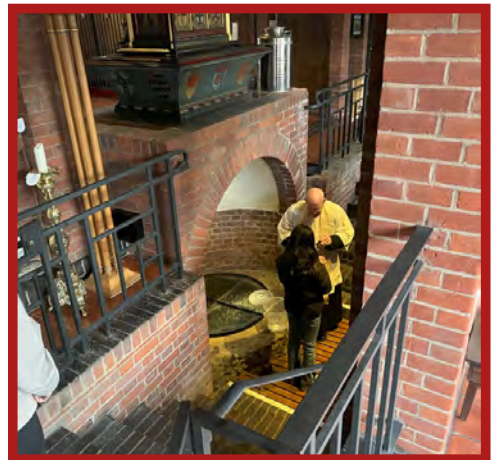


KS3/KS4/KS5

English/RE/RS/History Focus

Join us to immerse your students in being a pilgrim both in medieval times and today.

- Create a character (pilgrim)
- Journey back to medieval times and visit the Abbey
- Participate in a debate in court
- Make notes on the experiences
- Time to write (if required)
- Discover why Christians go on pilgrimage and what happens on a pilgrimage to Walsingham
- Why is it such a special place and how is it relevant today?
- What does Walsingham mean to pilgrims who come on pilgrimage?
- Spend time reflecting in the Holy House and light a candle
- Join together with Pilgrims to experience a short service of 'Sprinkling' with water from the Well

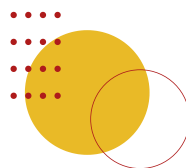


## OTHER OPTIONS



We are able to adapt any of our programmes to suit your exact requirements. We are also able to provide a number of other activities, talks and discussions. For example:

- **Special Transition-Journeys programme** (see page 8)
- Talks on vocation
- Discussion on key moral and ethical issues
- Talk/Discussion with a priest
- Talk/Discussion with a nun
- Teaching Mass
- Creative prayer or reflection activities
- Take part in Stations of the Cross
- Discussion on global Issues
- Discussion on values and commitments in faith-based living.



Please contact us, if you have specific requirements and we will work together to create a bespoke programme.





# TRANSITION- JOURNEYS



KS1/KS2/KS3/KS4/KS5



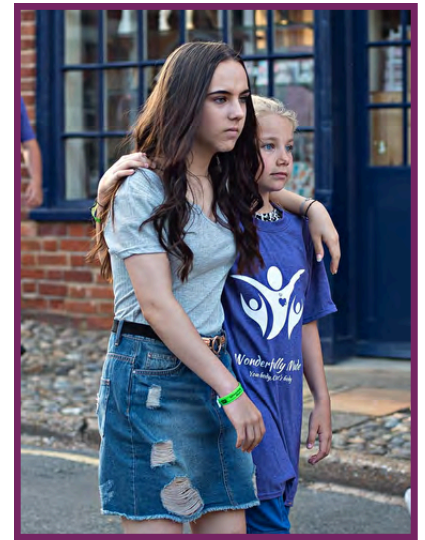
(Transition, PSHE, Spirituality, RE focus)

Pilgrimage is a journey, both physical and spiritual. We recognise that there are moments in the lives of young people when there are big transitions, particularly in year 6 and year 11 but at other times too.

Join us at the Shrine for a day or residential:

Consider pilgrimage and life as journeys and map out our own life journeys. Think about how things change, sometimes for the better and sometimes for worse. Participate in discussions and team building activities about transition considering how best to approach the challenges ahead.

Afternoon - mini pilgrimage to the Shrine, including the history of Walsingham, lighting a candle, visiting the Shrine Church and participating in the service of Sprinkling.

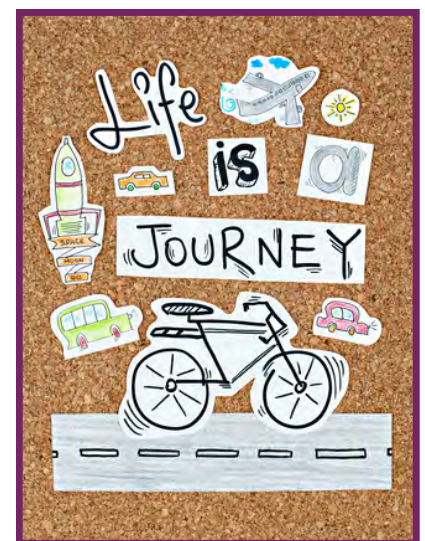


## SEND PROVISION

KS1/KS2/KS3/KS4/KS5

(RE/RS, English, Art)

All our programmes are adaptable for students with additional needs - please contact us for more details.



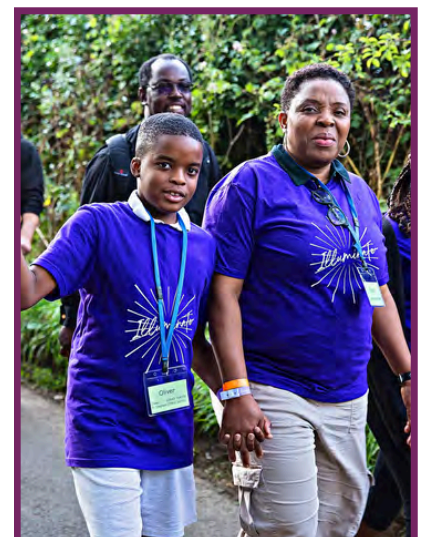
## SENSORY SESSION

KS1/KS2/KS3/KS4/KS5

(RE/RS, English, Art)

Join us for a sensory session in the Shrine church.

- Smell incense and candle smoke
- See art work, candles, stained glass
- Light a candle
- Feel artefacts and vestments
- Hear music and bells
- Respond using art materials





# RESIDENTIAL VISITS

KS2/KS3/KS4/KS5

Residential visits offer greater scope for planning an unhurried programme and we can tailor-make a package to suit the needs of your students. We can combine any of our programmes and you can then take the opportunity to add in some of our optional activities or discussion topics.

Groups are also welcome to take an active part in our regular pilgrimage services, which will give them a much deeper understanding and depth of experience. There are also opportunities to take part in a candle-lit procession, have a teaching Mass or explore spirituality and Christianity through craft activities.

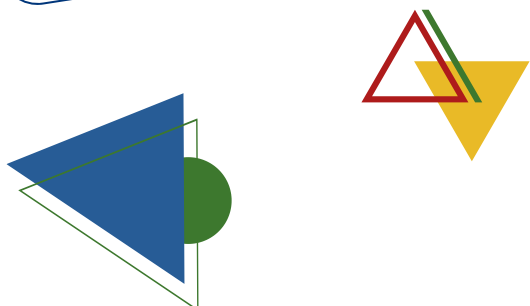
Accommodation is available from 1st February each year until early December. Rooms are warm and comfortable with a variety of single, twin and triple rooms. Towels and bed linen are provided. Schools have exclusive use of accommodation buildings for safeguarding reasons.

Meals are provided in the Refectory and packed lunches can also be ordered if you decide to explore the local area or visit the beach. There are a range of places to visit around Walsingham, including centres which offer outdoor and adventurous activities.



“  
I like how Holy and calming  
it was just to be there with  
God, Jesus and Mary...  
”

“  
It's a beautiful place  
and the food is really  
yummy!  
”



# VISITS TO SCHOOLS

## WALSINGHAM CAN COME TO YOU!

We would be very happy to visit your school or group and we offer a range of options for you to choose from or we can create a bespoke visit.

### PILGRIMAGE DAY/HALF DAY

#### **KS2/KS3/KS4/KS5 RE/RS/History/Art/Spirituality Focus**

A member of our Education Department will visit you in your school to explore what pilgrimage is and why pilgrims come to Walsingham. Learn all about the history of this special place, the reasons people go on pilgrimage, what they actually do and how it impacts on their lives. This is suitable for both primary and secondary schools and will be adapted to suit the age of your students and your own requirements.

### COLLECTIVE WORSHIP/TALKS

We can provide a range of talks on pilgrimage and other Christianity topics for any size of group. This could then be combined with a pilgrimage session for a class.

Please email [schools@olw-shrine.org.uk](mailto:schools@olw-shrine.org.uk) for further details or to discuss your requirements.

### PRE-VISIT OPTIONS

If you have arranged to visit the Shrine and booked to take part in one of our programmes we are able to come out to your school to provide a pre-visit session, to help your students get the most out of their day.

We welcome pre-visits from teachers. A member of the Education Department will be happy to show you around the site, explain our programmes in more detail and discuss your requirements.

### SUPPORT FOR SCHOOLS

Our Education Team is available to come out to your school to lead sessions or to provide support in a range of areas:

- INSET days or half days
- Teaching Christianity
- SIAMs
- Courageous Advocacy
- Creating/Developing a Christian Ethos
- Ministry to Children and Young People
- Collective Worship
- Pilgrimage

Please contact us on [schools@olw-shrine.org.uk](mailto:schools@olw-shrine.org.uk) or 01328 824205 to discuss your requirements.





# BOOKING

Advance booking is essential for any of our programmes or if you are coming on a self-guided visit.

Please contact us for the current price list or this information

is available on our website. Due to the size of the site, there is a limit of 60 students per day.

To make a provisional booking or to discuss available dates and your requirements please contact:

**Tel: 01328 824205**

**Email: [schools@olw-shrine.org.uk](mailto:schools@olw-shrine.org.uk)**



A link to the booking form will then be sent to you via email. Please complete this within 2 weeks and return to the Education Department.

Once we have received your completed booking form you will be sent the following:

- a confirmation letter
- links to a teachers guide, containing risk assessment guidance, directions for drivers and other information to help your day go as smoothly as possible.
- an invoice
- a personalised visit itinerary
- residential bookings will receive extra information with details of accommodation etc.

Full terms and conditions are available on the School Visits section of our website.

We request full payment 2 weeks in advance of your visit. Invoices will be sent to you by the Shrine's Finance Department.

Please inform us of any changes and particularly if your group size increases or decreases. Unfortunately, we are unable to offer a refund for children who do not attend on the day of the visit.

Our website contains a range of information booklets to support your teaching and a variety of resources, including teacher guides and videos, which you can use both before and after your visit.



“The ones (videos) on the website are really good quality, the children enjoyed watching them again as a refresher because they could put it in context.”

# OUR COMMITMENT TO YOU

**A professional service:** Members of the Education Department are all fully qualified teachers, all of whom have enhanced DBS checks.

**Learning:** We aim to present information in an interesting, engaging and friendly manner suitably adapted for each individual age group.

**Preparation/Risk Assessment:** We will provide information to assist you with your own risk assessment and welcome pre-visits to The Shrine.

**Content:** Content and resources are linked to the curriculum and locally agreed syllabi.

**Safe Learning Environment:** We provide your group with a lockable room to store lunches, bags and coats.

**Working in Partnership:** We will aim to suit your particular needs wherever possible. We welcome your feedback as we are always striving to improve what we offer. A link to a feedback survey will be sent after your visit.

“ We had a wonderful day. We always come back feeling so refreshed as it is such a special place. ”

“ Nothing was too much trouble and you were all so flexible. A wonderful experience, we will be back. ”



For further information about The Shrine of Our Lady of Walsingham  
please visit our website  
[www.walsinghamanglican.org.uk](http://www.walsinghamanglican.org.uk)

or follow us on Facebook, Twitter and Instagram  
Shrine of Our Lady of Walsingham (Anglican)  
Email: [schools@olw-shrine.org.uk](mailto:schools@olw-shrine.org.uk)  
Tel: 01328 824205

